

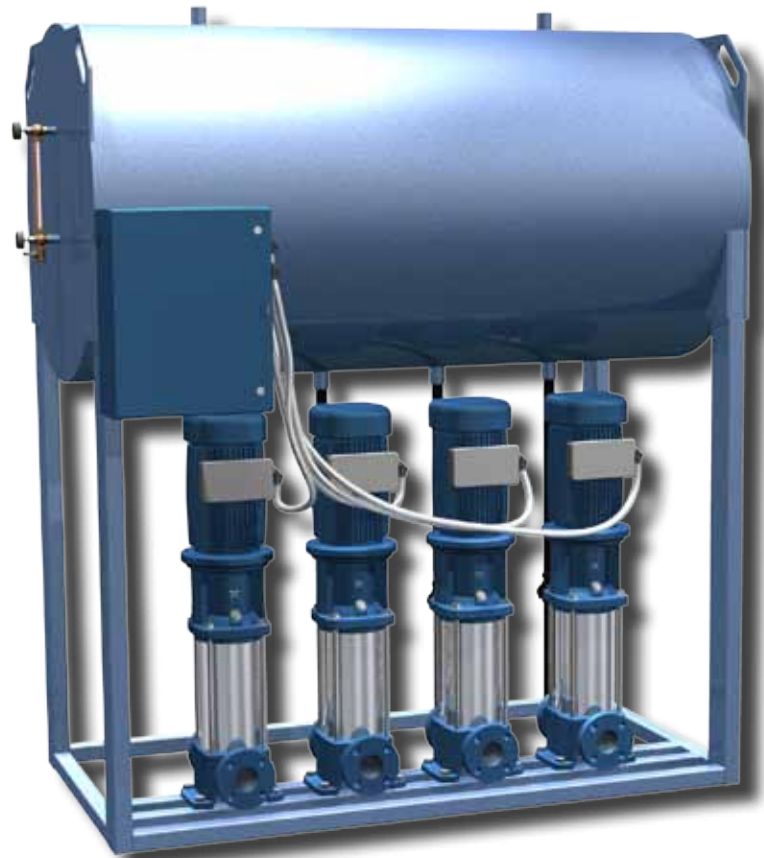


WILLIAMS & DAVIS BOILERS

Established 1921

Feed-Water Systems

Boiler Feed-water / Condensate Receiver



**SIZES 15HP THROUGH 1500HP
SIMPLEX, DUPLEX, TRIPLEX & QUADPLEX SYSTEMS
PRESSURES OF UP TO 300 PSIG**

Williams & Davis Feedwater Systems.

- All Pumps Deliver the Required Capacity at 210° F
- Provides Additional Storage Time and Handles Volume-Swings in Condensate Return

Product Offering

When equipped with an automatic steam preheater, feedwater temperature can be maintained at 210 °F . At this higher temperature, oxygen and carbon dioxide are released, reducing corrosion problems in the boiler. Pre-heating is recommended if return condensate constitutes 40% or less of the feedwater required. Williams & Davis Packaged Feedwater Systems include pumps, control panel with magnetic starters, and necessary switches. Systems are available in simplex, duplex, dual and triplex arrangements. Custom arrangements are also available. Accessories include high temperature diffuser tube, automatic preheater, make-up valves, electrolytic corrosion inhibitor, and ASME tanks. Contact your local Williams & Davis authorized representative for information on alternate W&D Pump Feed Systems.

Simplex Units

Simplex units include one pump set complete with open dripproof motor on steel channel base with flexible coupling between pump and motor, one large receiver mounted on structural steel stand, complete with make-up valve, gauge glass with shutoff valves, thermometer, and suction piping from receiver to pump with Y-type strainer, flexible hose and gate valve.

Duplex Units

Duplex units are similar to simplex units, but with two pumps and one receiver. Magnetic starters (where required) are mounted in a NEMA I enclosure, with manual transfer switch for standby pump.

Dual Unit

Dual units are similar to duplex units, except that receiver tank is sized for two boiler operation. Transfer switch is not required.

Triplex Units

Triplex units are similar to Dual units but with three pumps and one receiver.

Standard Trim

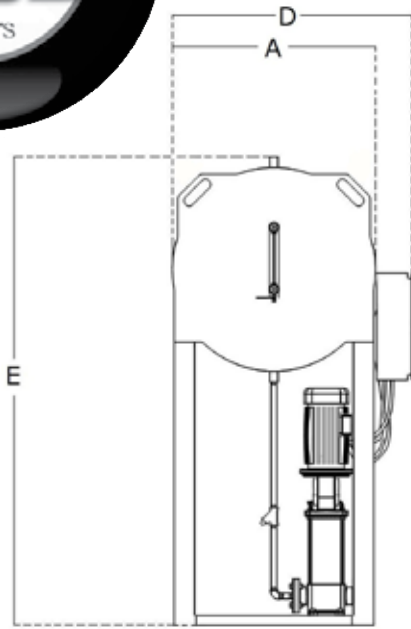
- Stand.
- Boiler feed pump and motor.
- Control panel.
- Magnanetic starter.
- Suction shutoff valve.
- Suction strainer.
- Suction flexible fittings.
- Gauge glass set w/ brass cock valves.
- Internal float make-up valve.
- Thermometer.
- Required tappings.

Optional Trim

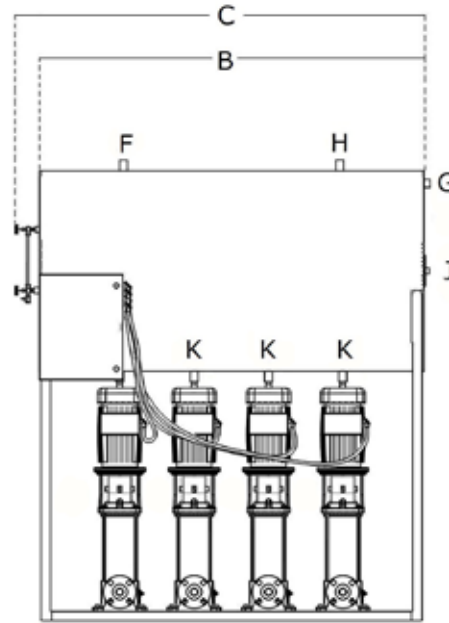
- Secondary feedwater pumps.
- Preheating systems
- High temperature diffuser
- Manhole
- External float make-up valve
- Electric alternator
- ASME code tank



(Available in vertical configuration)



SIDE



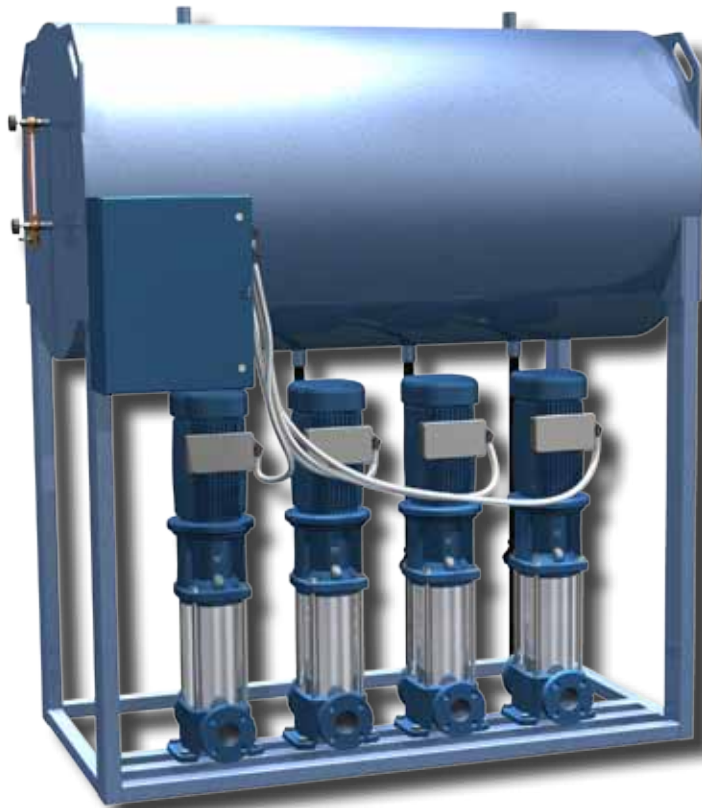
FRONT

Model	Diameter - Outer	Length - Feedwater	Length Overall	Width Overall	Height Overall	Vent	Over Flow	Cond. Return	Water Supply	Pump Connection	Gallon Capacity
	A	B	C	D	E	F	G	H	J	K	
FW015	16"	24"	28"	22"	36"	1"	2"	1"	1/2"	1"	21
FW020	16"	36"	40"	22"	26"	1-1/2"	2"	1"	1/2"	1"	31
FW025	16"	36"	40"	22"	26"	1-1/2"	2"	1"	1/2"	1"	31
FW030	16"	48"	52"	22"	36"	1-1/2"	2"	1"	1/2"	1-1/4"	42
FW040	16"	48"	52"	22"	36"	1-1/2"	2"	1"	1/2"	1-1/4"	42
FW050	16"	60"	64"	22"	36"	1-1/2"	2"	1-1/2"	1/2"	1-1/4"	52
FW060	24"	36"	40"	30"	60"	2"	2"	2"	1/2"	1-1/4"	66
FW080	24"	60"	64"	30"	60"	2"	2"	2"	1/2"	1-1/4"	109
FW100	24"	60"	64"	30"	60"	2"	2"	2"	1/2"	1-1/4"	109
FW125	30"	48"	52"	36"	66"	2"	2"	2"	3/4"	1-1/4"	146
FW150	30"	60"	64"	36"	66"	2"	2"	2"	3/4"	1-1/4"	183
FW175	30"	60"	64"	36"	66"	2"	2"	2"	3/4"	1-1/4"	183
FW200	38"	48"	52"	44"	74"	2"	2"	2"	3/4"	2"	235
FW250	38"	72"	76"	44"	74"	2"	2"	3"	3/4"	3"	353
FW300	38"	72"	76"	44"	74"	2"	2"	3"	3/4"	3"	353
FW350	42"	84"	88"	48"	78"	2"	2"	3"	3/4"	3"	500
FW400	42"	84"	88"	48"	78"	2"	2"	3"	3/4"	3"	500
FW500	42"	84"	88"	48"	78"	2"	2"	3"	3/4"	3"	500
FW600	48"	84"	88"	54"	96"	3"	2"	4"	3/4"	3"	658
FW700	48"	96"	100"	54"	96"	3"	2"	4"	1"	3"	752
FW800	54"	108"	112"	60"	102"	3"	2"	4"	1"	3"	1070

Feedwater Systems are specifically designed for compatibility with Williams & Davis' Boilers.

Specifications subject to change without notice. Overall Height may change depending on (NPSH) requirements of feedwater pump.

Please contact your local Williams & Davis Representative for more details.



Your Authorized Williams & Davis Representative

P.O. Box 539
2044 S. I-45
Hutchins, Texas 75141

(800) 8-BOILER
(800) 826-4531

(972) 225-2356
(972) 225-5739 FAX

www.wdboiler.com
info@wdboiler.com